

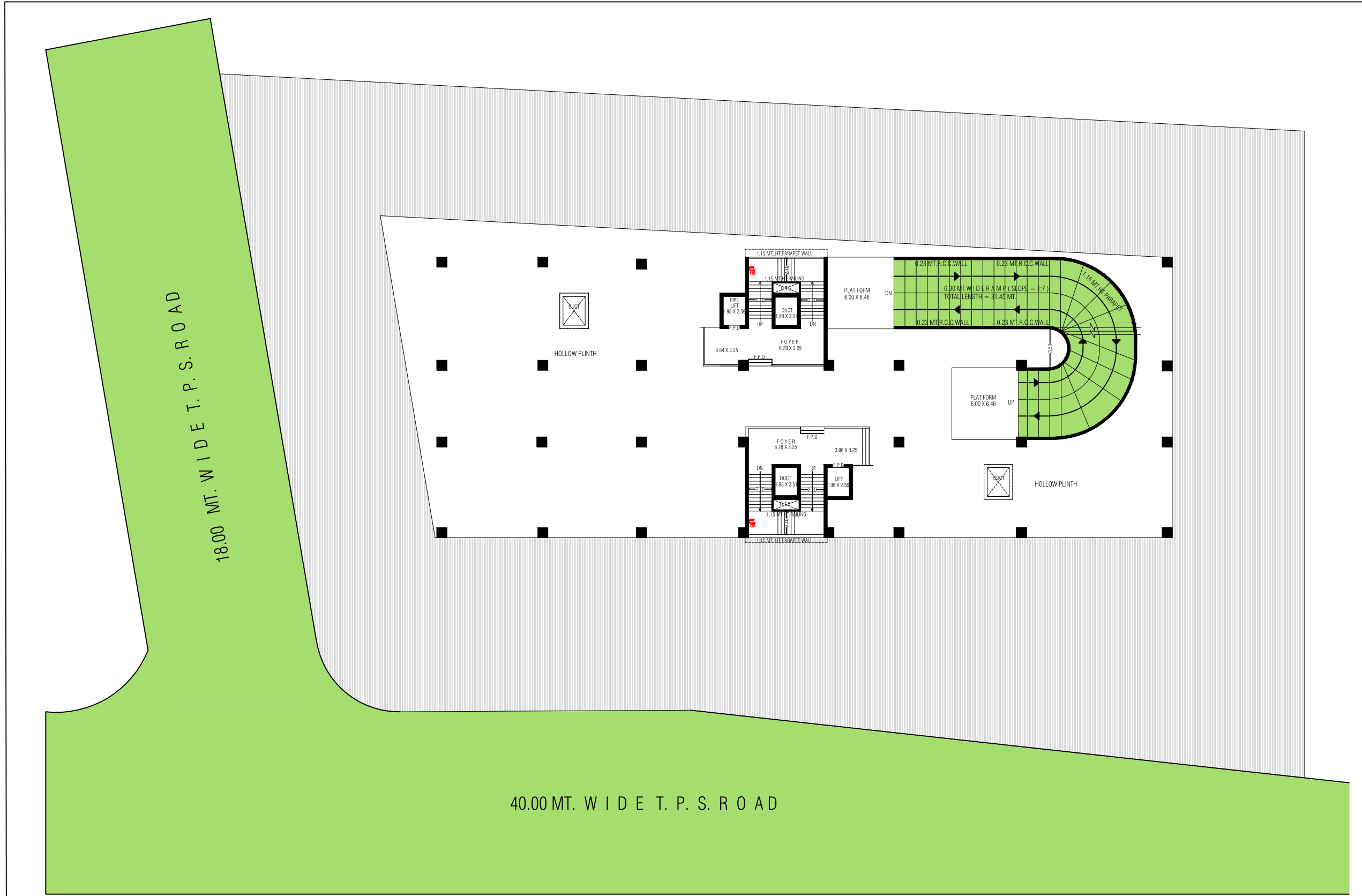


ROYCE ONE
EMPOWER YOUR EMPIRE



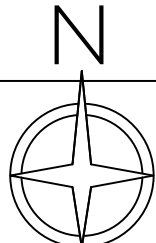
LIGHTNING ARRESTER
FLOOR
4

ELEVATION



LAYOUT PLAN

ROYCE ONE

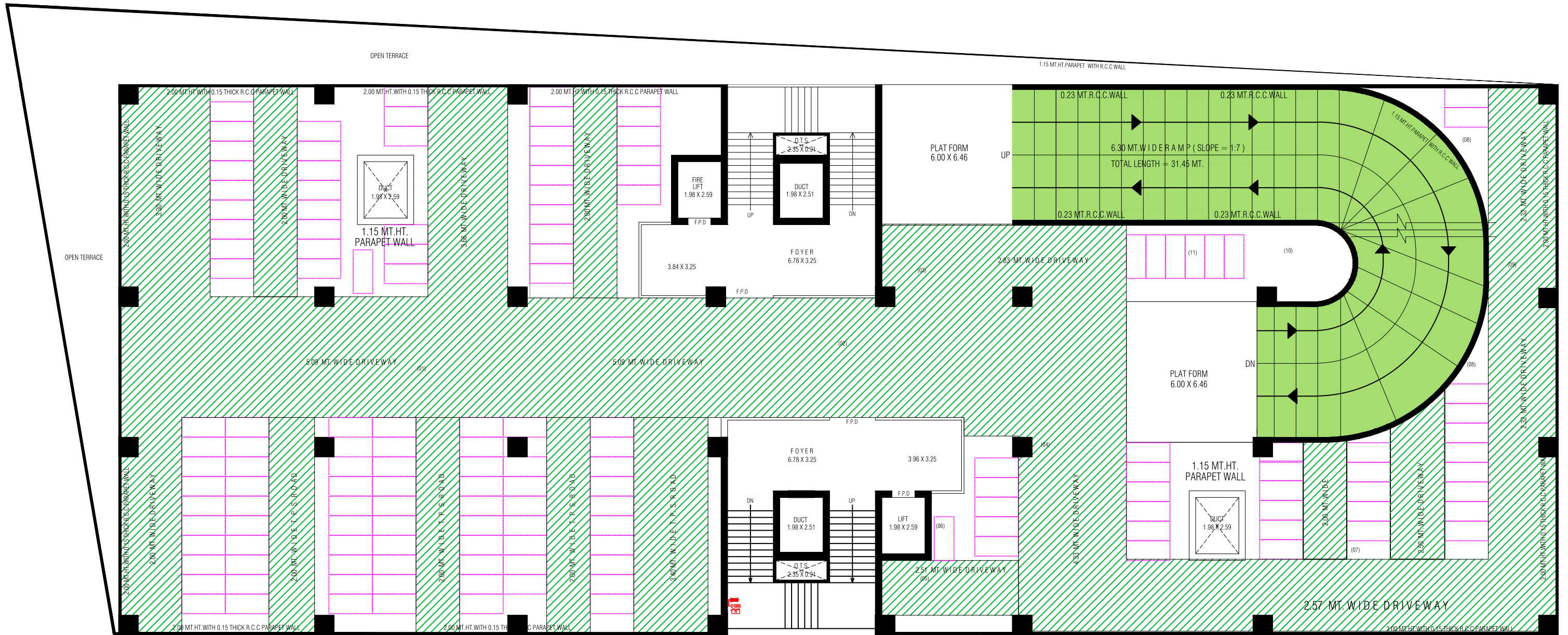




GROUND FLOOR PLAN

ROYCE ONE





1ST FLOOR PLAN

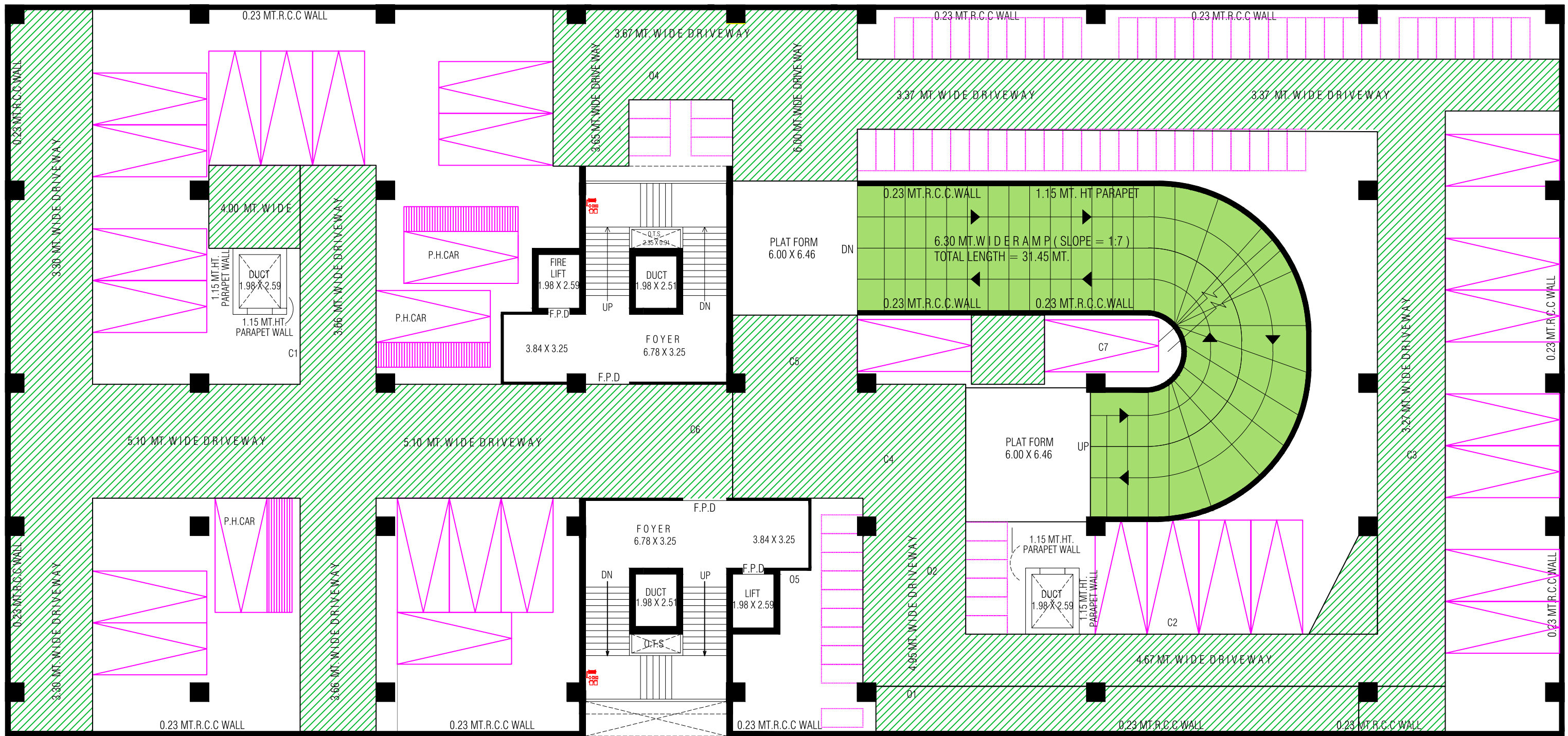
ROYCE ONE





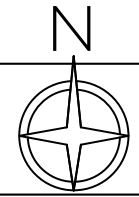
4TH TO 9TH FLOOR PLAN

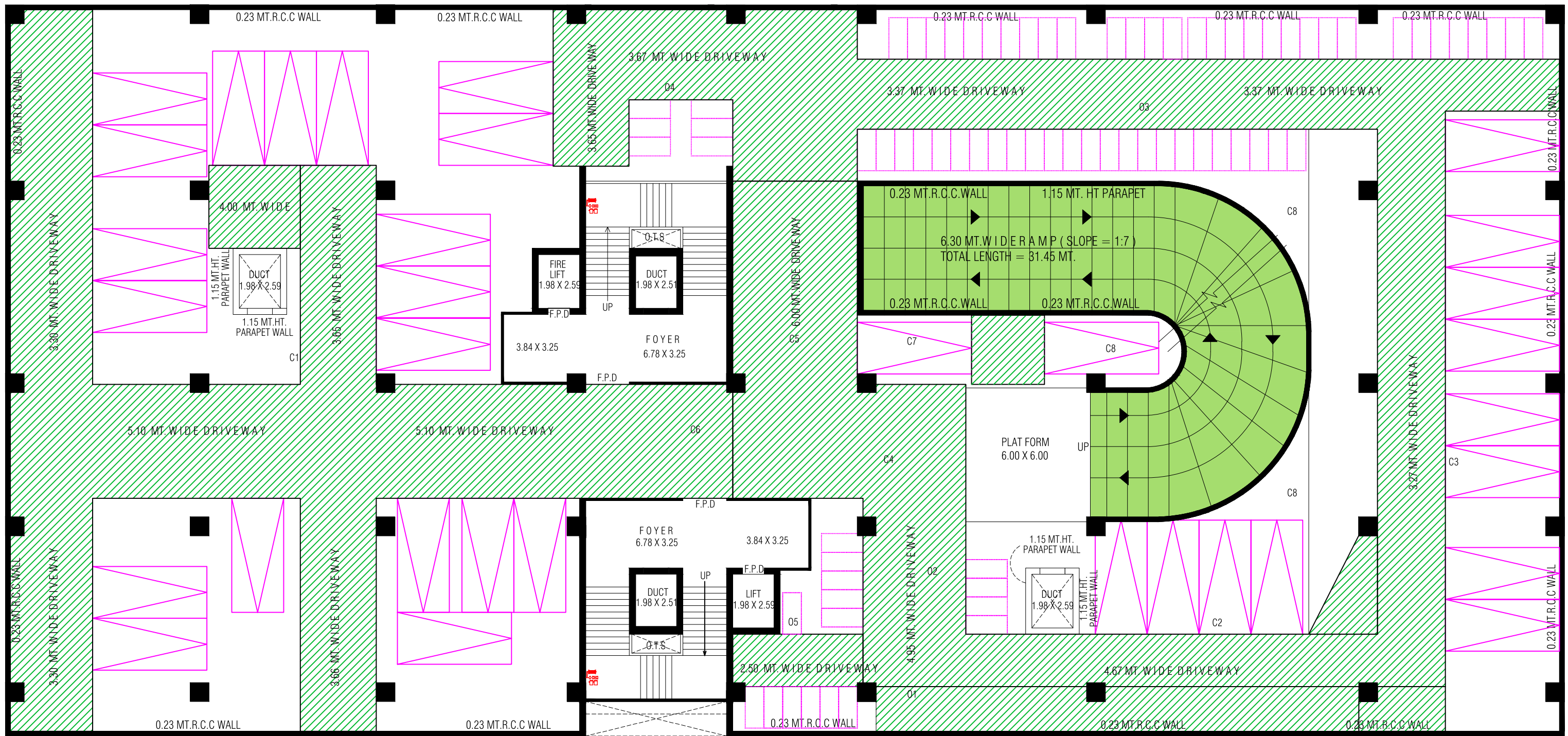
ROYCE ONE



BASEMENT-1

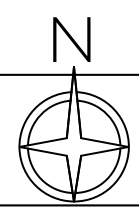
ROYCE ONE





BASEMENT-2

ROYCE ONE



FLOORING :

800 X 800 mm vitrified tile flooring in living & dining
800 X 800 mm vitrified tile flooring in other rooms
Rustic tiles in balcony

KITCHEN & WASH AREA :

Polished granite platform with stainless steel sink
Plumbing provision for R.O.plant & washing machine
Kota/vitrified tile in wash area with vitrified tile dedo
Glazed tile dedo up to lintel level on kitchen platform

DOORS :

Main door veneer finish with wooden frame and night latch lock
All internal door flush/wpc doors with standard quality lock

WINDOWS :

Anodized coated heavy aluminium sliding windows with stone jambs

ELECTRIFICATION :

3 Phase concealed copper wiring with modular switch
MCB distribution panel
Provision for T.V./cable/telephone points in each room

BATHROOMS :

Ceramic tile in floor and dedo up to lintel level
Counter basin/wall hung basin
Jaguar or equivalent cp fittings & wall hung EWC
Supreme/astral or equivalent corrosion free & leak proof cpvc/upvc fittings

INTERNAL & EXTERNAL WALL FINISH :

All Internal wall with plaster and putty finish
External wall with 100% acrylic paint finish

Architect : PDC Architects

Clerk of Woks/S.O.R : Hardik Babulal Mistry

Engineer : Jignesh Almoula

Structural Engineer : D. H. Patel

Promoter Name : Shreem Rajyash Projects LLP

Mobile : 9377747237

Address : F.P. No. 134, Bopal Ambli Road, Bodakdev

www.gujrera.gujarat.gov.in

RERA Number: